



**mainpower**

# INTERNSHIP AND GRADUATE PROGRAMME

KICKSTART YOUR CAREER AT MAINPOWER.



# KICKSTART YOUR CAREER WITH MAINPOWER

**MainPower builds, maintains, and operates the electricity distribution network of North Canterbury.**



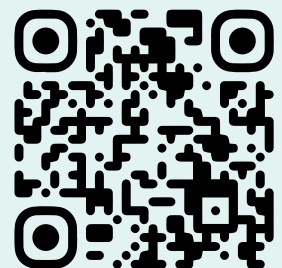
With a head office in Rangiora and depots in Culverden and Kaikōura, our team of 180 office and field-based employees play an important role in making our region a great place to live and work.

#### **Working at MainPower:**

- An easy commute from Christchurch or the Waimakariri and Hurunui districts.
- On-the-job training and development opportunities.
- Build experience across a variety of business areas.
- Use innovative technologies and systems.
- Contribute to decarbonising New Zealand.
- Supportive team environment.
- Opportunity to make a difference for the North Canterbury community.

MainPower offers paid summer internships and a two-year Graduate Programme.

**Find out more about working at MainPower by watching a short testimonial video about Kirk McDonald, who works in our Customer Initiated Works Team.**





Rangiora



Hanmer Springs



Kaikōura



# OUR REGION

Located just north of Christchurch, we provide electricity distribution services to over 44,000 residential and business connections between the Waimakariri River and Kaikōura.

To find out more about North Canterbury visit [northcanterbury.co.nz](http://northcanterbury.co.nz)



# MAINPOWER NETWORK MAP

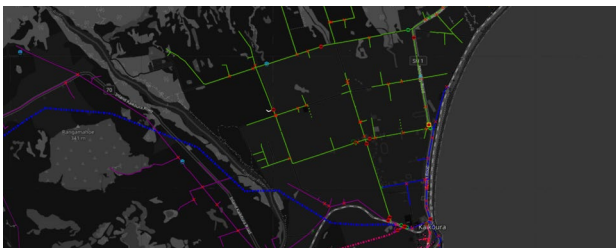


# WHY MAINPOWER?



**MainPower's graduate programme gave me the opportunities and experience needed to kickstart my career in the electricity industry. The mentorship, training and development offered by MainPower was incredibly valuable in preparing me for my new role as MainPower's Network Planning Engineer.**

Mac Karalus  
Network Planning Engineer



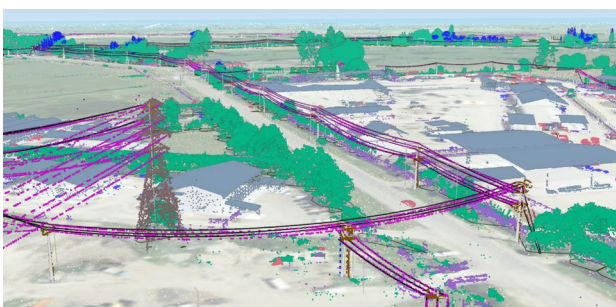
## Career growth

Gaining experience and skills across a range of business areas was key to starting my career in the electricity industry. Throughout the programme I learnt how different teams collaborate to plan, build and operate the network. Hands-on experience in the field helped me understand how work is physically delivered.



## Make a difference

Throughout the programme I had the opportunity to be involved with real projects while developing my technical skills and knowledge. Asset Management projects included maintaining critical network infrastructure and using drones to gather visual data from pole mounted equipment. Design projects included installing a new feeder cable in a zone substation, reviewing alternative earthing conductors for preventing theft, and enabling automated network switching to improve network resilience. Planning projects included monitoring network loading to identify constraints and capacity, investigating and resolving power quality events, and integrating renewable energy sources such as solar generation into the network. These projects had a positive impact on MainPower's network and the North Canterbury community.



## Innovation

During the programme I was exposed to a range of innovative projects and technologies. From using our Advanced Distribution Management System (ADMS) to learn about monitoring, control and outage management through to using our LiDAR network model to assist network maintenance and design. I now work with network monitoring and analytics to identify the challenges and opportunities associated with electrification – what are the impacts of decarbonisation, decentralisation and digitisation?



# INTERNSHIPS

Through MainPower's internship programme, you will work alongside professionals in a variety of disciplines and gain valuable business experience. Our internships are paid positions, based in our Rangiora head office.

## Eligibility

Successfully completed 2-3 years of study in tertiary education (e.g. 2nd professional engineering).

### Internship key dates

- **April** – Applications open.
- **May** – Interview process takes place.
- **June** – Where applicable, interns may join MainPower during semester break.
- **October** – Work programme and summer projects for interns issued.
- **November** – Summer internships begin.
- **February** – Summer internships conclude.

**Notes:** Dates provided are an approximate guide only. MainPower has a mandatory shut down period of approximately two weeks across the Christmas and New Year period.





# GRADUATE PROGRAMME

MainPower's Graduate Programme is designed to give you experience across a range of business areas, supporting you to identify the career path that is right for you.

This is a two-year, structured programme, which will see you working on tasks and projects that will make a difference within the business from day one.

You will gain valuable experience in a professional environment and be supported throughout the process to get the most out of this exciting opportunity.

## Eligibility

The Graduate Programme allows you to build on the foundations of your study across several disciplines. Depending on the business requirements, the Graduate Programme may be operation in one of more of the following business areas: asset management, engineering and design, network planning, technology, data and analytics, and business administration.

### To apply you must have:

- completed your final year of study;
- a tertiary qualification;
- legal right to work in New Zealand.

## Selection Process

### You will be assessed on your:

- self-awareness and a commitment to career development;
- interests relevant to the position being filled;
- relevant qualifications;
- communication skills (listening, oral and written).

# SUPPORTING YOU TO ACHIEVE YOUR GOALS

**As a graduate you will be given responsibility to drive your own development and learn our business, while being supported by a professional workforce. Your opportunity to advance your skill set is driven by you and your strong desire to grow.**

MainPower will provide the following support and guidance to help you achieve your goals:

**Buddy** – your graduate buddy will help you settle into the business, providing helpful tips and advice.

**Mentor** – you may also be assigned a mentor from within the business. This will be a senior employee who will provide objective feedback and guidance for your development.

**Check in sessions** – Throughout the programme, you will have regular check in sessions with a member of the People and Culture team and a nominated manager to discuss your progress and offer any other support (if required).



## Graduate Programme key dates

- **April** – Applications open.
- **May** – Interview process takes place.
- **June** – Where applicable, interns may join MainPower during semester break.
- **October** – Work programme and summer projects for interns issued.
- **November** – Summer internships begin.
- **February** – Summer internships conclude.

**Notes:** Dates provided are an approximate guide only. MainPower has a mandatory shut down period of approximately two weeks across the Christmas and New Year period.



# **WORKING TOWARDS A SMARTER FUTURE**



For more information,  
visit [mainpower.co.nz/careers](http://mainpower.co.nz/careers)

MainPower New Zealand Limited

172 Fernside Road, RD1, Kaiapoi 7691  
PO Box 346, Rangiora 7440

Phone 0800 30 90 80  
[www.mainpower.co.nz](http://www.mainpower.co.nz)

The logo for MainPower, featuring the word "mainpower" in a bold, lowercase, sans-serif font. Above the letter "i" in "power", there are three slanted, parallel lines of varying lengths, resembling a stylized power symbol or a signal icon.