

TREES & VEGETATION

TREE OWNER INFORMATION

WORKING TOGETHER

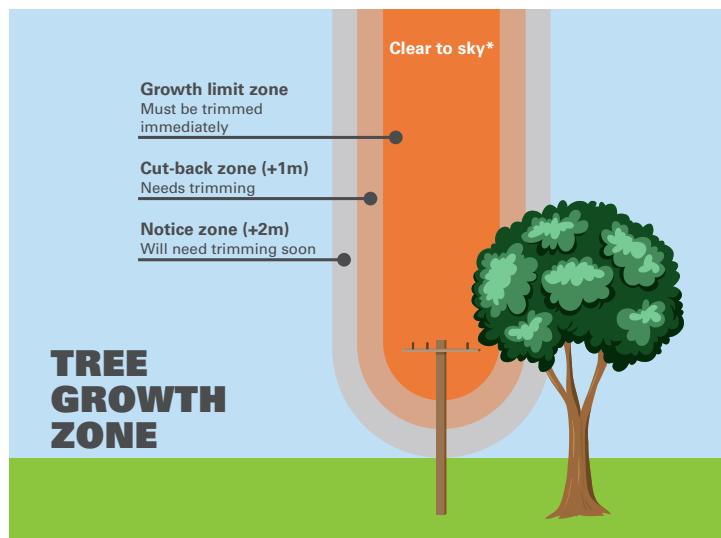
The majority of us require electricity on a daily basis, whether it be personally or in business. When an unplanned power outage occurs, it can be a significant disruption to our daily lives for you and your community.



AROUND 20%* OF UNPLANNED OUTAGES COULD BE AVOIDED BY KEEPING TREES AND VEGETATION CLEAR OF POWER LINES.

YOUR RESPONSIBILITIES AS A TREE OWNER

Did you know it is a legal requirement (not set by MainPower) that you act in accordance with the Electricity (Hazards from Trees) Regulations 2003.



Power line voltage	Notice zone	Cut-back zone	Growth limit zone
230–400 V	2.5m	1.5m	0.5m
11kV	3.6m	2.6m	1.6m
22kV*	3.6m	2.6m	1.6m
33kV*	4.5m	3.5m	2.5m
66kV or more*	6.0m	5.0m	4.0m

*For anything 22kV and above, all vegetation, including overhanging branches, must be clear to sky.

- Notes:
 - These distances are from the power line and related equipment, not the power pole.
 - These distances are a minimum and apply in all conditions, including high wind or snow.
 - In most instances, the power lines that go to a house or building are low voltage power lines.
 - If a tree is within the Growth limit zone, it should only be trimmed or removed by a qualified arborist, within a specified timeframe.

*Based on data from April 2023 – 31 March 2024.

WHY TRIM YOUR TREES?

- Trees, hedges, and shelter belts can break power lines and network equipment, resulting in risk of serious injury or death, as well as causing widespread power outages.
- Trees close to lines may cause electrical sparking resulting in a fire.
- In severe weather conditions, vegetation can become electrically 'live' and may electrocute anyone coming into contact with it.
- Children that climb trees close to power lines are at risk of serious injury or death.
- Snow and ice can break tree branches, which can damage power lines.
- Tree roots can damage underground electricity cables, causing power outages.

NOTICE ZONE AND GROWTH LIMIT ZONE

There are multiple zones for trees growing close to power lines and other electrical equipment. The **Notice**, **Cut-back** and **Growth limit zones**. There is also the Fall hazard zone – this zone is not currently in the Regulations but covers trees that might present a hazard if they were to fall and damage power lines.

'Clear to the sky' is a new requirement for all lines 22kV or greater, plus certain high-risk lines at 11kV. It was announced in October 2024, however it will not be enforced until 16 October 2026. Refer to zone diagrams above.

If you have been given a cut or trim notice and fail to adhere to the requirements, in either trimming or removing trees, you may be liable for a considerable fine (up to \$10,000).

Trimming early and ensuring all vegetation is maintained to the extent of the Notice zone will ensure you do not receive legal notice to trim.

TREES & VEGETATION TREE OWNER INFORMATION



FALL HAZARD ZONE

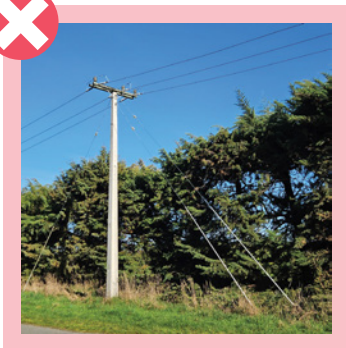
This zone is where trees might present a hazard if they fall and damage power lines.

Don't forget, before you plant any trees or hedges near power lines, plant those that have a slow growth rate, or dwarf species, otherwise you will be trimming on a regular basis which is time consuming and costly.

HEDGES AND SHELTERBELTS

North Canterbury has a large rural community. Hedges and shelterbelts are common, and it is important to ensure they are kept a safe distance from power lines.

Reminder – it's not just trees that need to remain clear of the 4 metre Controlled Access Zone.



SAVING YOU TIME AND MONEY

Where maintenance is required to keep trees, hedges, and shelter belts away from power lines, it can be a real cost saver to have a maintenance schedule locked in with your preferred approved contractor. Don't forget if not maintained, trees, hedges or shelter belts can encroach the Growth Limit Zone, this then means they can **only** be trimmed by a **Network Approved Contractor** (who uses specially insulated tools and equipment, and sometimes a power outage is necessary to keep everyone safe). These options start to become costly and disruptive.

CONTACT US

If you have any questions around keeping trees, hedges and shelter belts away from power lines, please contact us on 0800 30 90 80 or visit our website www.mainpower.co.nz. Alternatively, email our Trees and Vegetation team at trees@mainpower.co.nz.

MainPower provides a free complaints resolution service. If you have any concerns or a complaint about a MainPower service, please call us on 0800 30 90 80 or email us at feedback@mainpower.co.nz.

MainPower is a member of the Utilities Disputes Complaints Scheme. If you ever have a complaint we cannot resolve, you can contact Utilities Disputes, a free and independent service for resolving complaints. For more information visit their website: udl.co.nz.

24 Hour Fault Line
0800 30 90 80

Learn more
mainpower.co.nz

